

ALMONDS

**TASTE, TEXTURE,
VARIETY, NUTRITION.
A VERSATILE
INGREDIENT FOR
THE PLANT-BASED
MARKET**

**FROM OUR OWN FARMS
TO YOUR BUSINESS**

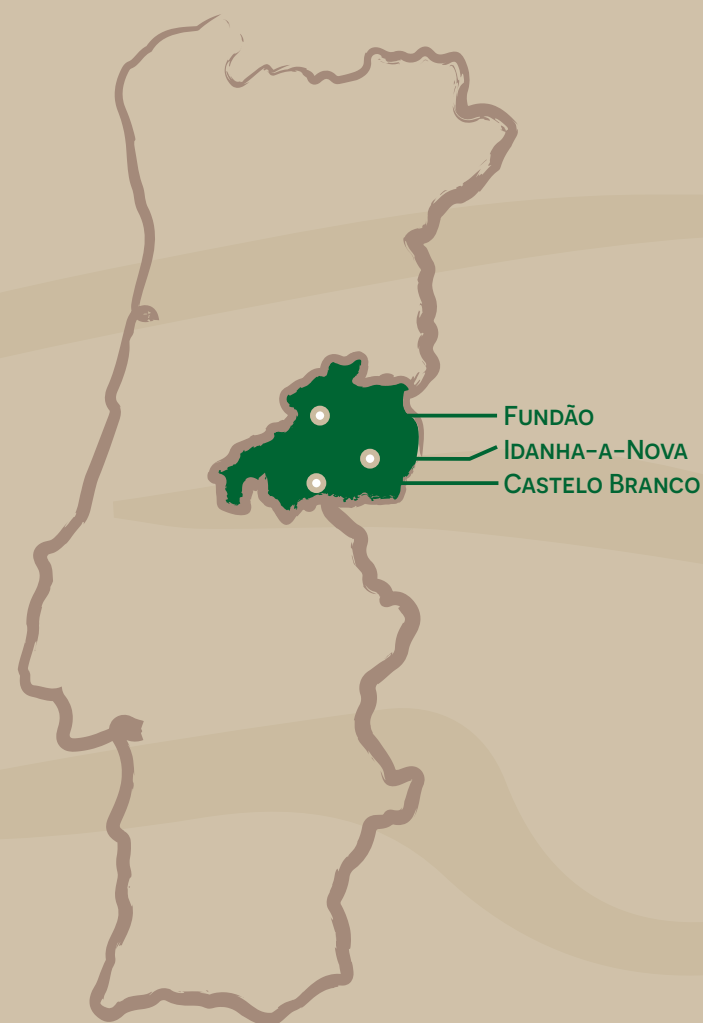


veracruz
ALMONDS

WE ARE A PREMIUM ALMOND FARMER

Our dedication to sustainable farming has led us to specialize in premium regenerative Mediterranean almonds, harvested and processed with the utmost care.

On 1.300 hectares of farmland located across five properties throughout Portugal's Fundão and Idanha-a-Nova municipalities, we use cutting edge precision agriculture techniques alongside social responsibility practices for a truly holistic approach that benefits everyone involved!



1.300 HA 5 FARMS

7 ALMONDS VARIETIES

AS PRODUCER, WE CONTROL ALL THE PROCESSES

FROM OUR SOIL TO YOUR PLATE WE SAFEGUARD:
NATURALLY FUNCTIONAL



ALMONDS **DIRECTLY**
FROM THE FARMER



GUARANTEE OF
ORIGIN (PORTUGAL)



QUALITY OF OUR ALMONDS BASED
ON OUR **BEST REGENERATIVE**
AGRICULTURAL PRACTICES



PROVIDE TRACEABILITY TO
IMPROVE **TRANSPARENCY**
IN ALL STEPS

A close-up photograph of almond tree branches. The branches are covered with vibrant green, elongated leaves. Several almond husks are visible, some in various stages of ripening, showing their characteristic brown, textured surface. The lighting is bright and natural, highlighting the textures of the leaves and husks.

**ALMONDS
AS A BETTER
CHOICE**

ALMOND AS THE HEALTHIEST NUT

ALMONDS ARE AN **INCREDIBLY NUTRITIOUS** AND **VERSATILE OPTION FOR PLANT-BASED FOODS**. NOT ONLY ARE THEY A GOOD SOURCE OF HEALTHY FATS, BUT THEY ALSO CONTAIN **HIGH LEVELS OF PROTEIN, FIBER, VITAMINS AND MINERALS**.

THEY ARE A GREAT SOURCE OF HEALTHY FATS, PROTEIN, AND OTHER VITAL NUTRIENTS THAT YOUR BODY NEEDS TO THRIVE.

**EXCELLENT SOURCE OF
PLANT-BASED PROTEIN
FOR VEGANS AND
VEGETARIANS**

**PROVIDE
POLYUNSATURATED
FATS**

**VERSATILE IN
THE KITCHEN**

**EXCELLENT SOURCE OF
MONOUNSATURATED FATS**



ALMONDS ARE THE BEST AND MOST NUTRITIOUS PLANT-BASED INGREDIENT

MORE THAN AN
ALTERNATIVE INGREDIENT



**ALMOND'S INFLUENCE ON OTHER
AREAS OF HUMAN HEALTH,**
BETTER-FOR-YOU; GUILT FREE;
TAILORED TO FIT INDULGENCE;
GLUTEN FREE; FUNCTIONAL FOOD

NUTRITIONAL COMPOSITION

THE **MEDITERRANEAN CLIMATE** FAVOURS
THE NUTRITIONAL **PROPERTIES** OF OUR ALMONDS.

2567kJ**

ENERGY

24g*

PROTEIN

13g**

OMEGA 6

11g*

FIBER

*SOLETA **AVIJOR

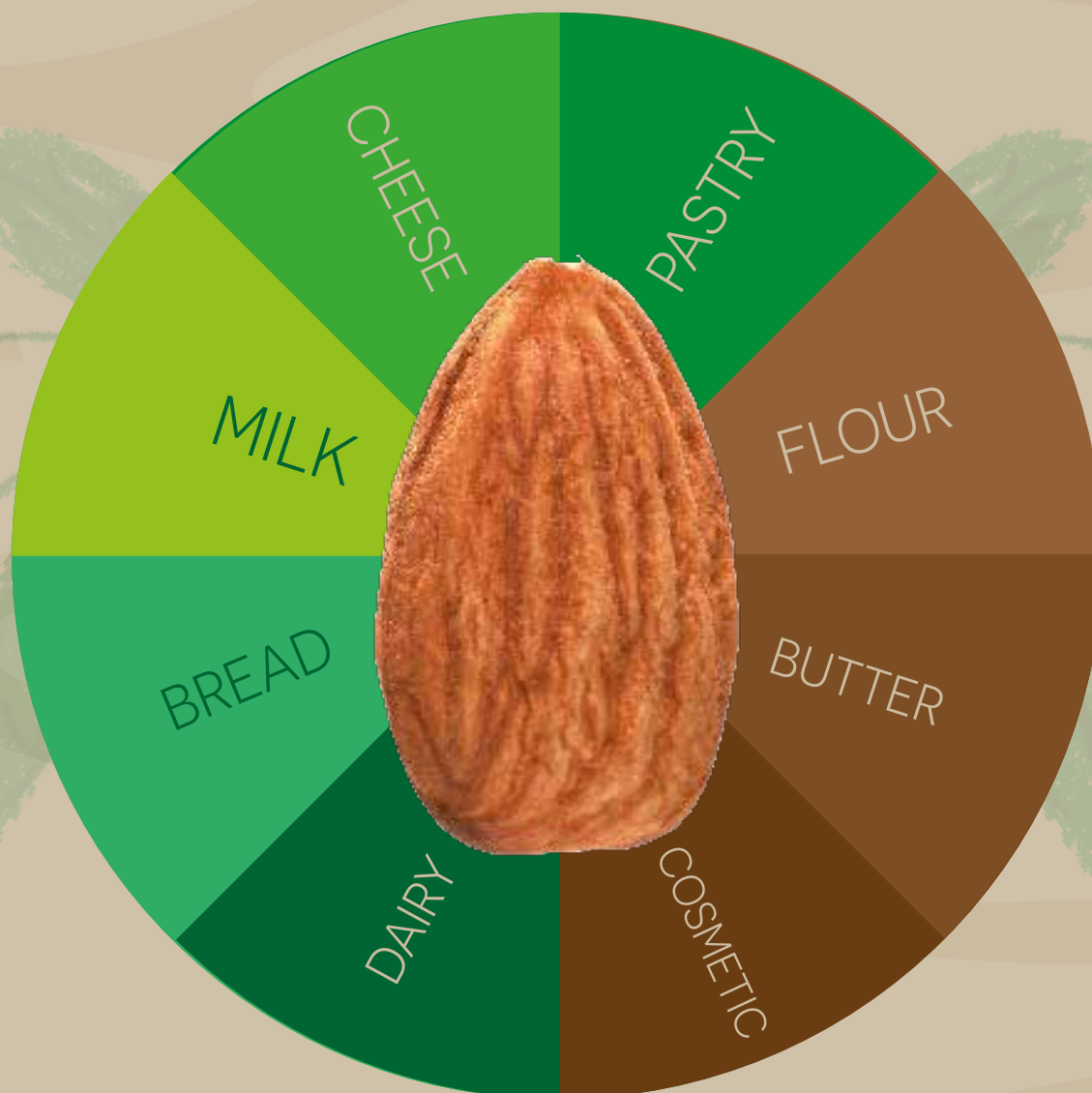
*Food Ingredients First

<https://www.foodingredientsfirst.com/news/almonds-remain-the-number-one-nut-in-new-product-introduction-for-eighth-year.html>

A VERSATILE **INGREDIENT**

NOT ONLY ARE ALMONDS A **NUTRITIONAL POWERHOUSE**, BUT THEY ARE ALSO **INCREDIBLY VERSATILE** AND CAN BE ENJOYED IN A VARIETY OF DIFFERENT WAYS. FROM ALMOND MILK TO ALMOND BUTTER, THERE ARE COUNTLESS WAYS TO INCORPORATE THIS NUTRITIOUS NUT INTO YOUR DAILY MEALS AND SNACKS. PLUS, THANKS TO THEIR LONG SHELF LIFE AND PORTABILITY, **THEY MAKE FOR AN IDEAL ON-THE-GO SNACK OPTION.**

PLANT-BASED **PRODUCTS**



“ALMONDS CAN DELIVER ON BOTH TASTE AND TEXTURE WHEN ADDED TO PLANT-BASED PRODUCTS.”

*Food Ingredients First

<https://www.foodingredientsfirst.com/news/almonds-remain-the-number-one-nut-in-new-product-introduction-for-eighth-year.html>

ALMOND VARIETIES

WE ALSO HAVE THE **PENTA, MARINADA AND MAKAKO VARIETIES** IN THE PLANTATION PHASE

AVIJOR

Self-fertile variety with late flowering and early maturation. Grain yield between 35 to 40%. Grain of medium size (1,3g). The taste of this sweet fruit is very pleasant to the palate.

BELONA

Variety of high vigor, late flowering and early maturation. Grain yield between 27 to 35%. Grain of medium size (1,3g). It's crunchy, creamy and of a unique sweetness, smoothness and velvety.

SOLETA

High vigor variety, late flowering. Grain yield between 27 to 35%. Grain of medium size (1,27g). The texture is crispy and crunchy, smooth and rich.

GUARA

Self-fertile variety with very intense and late flowering. Grain yield between 32 to 36%. Grain of medium size (1,25g). Traditional taste of almond, which combines with its crunchy and intense texture.

ALMOND FORMS



NATURAL KERNEL
NATURAL ROASTED



BLANCHED
ROASTED BLANCHED



LAMINATED
ROASTED LAMINATED



LONG PIECES



NATURAL GROUNDED
BLANCHED GROUNDED
ROASTED GROUNDED

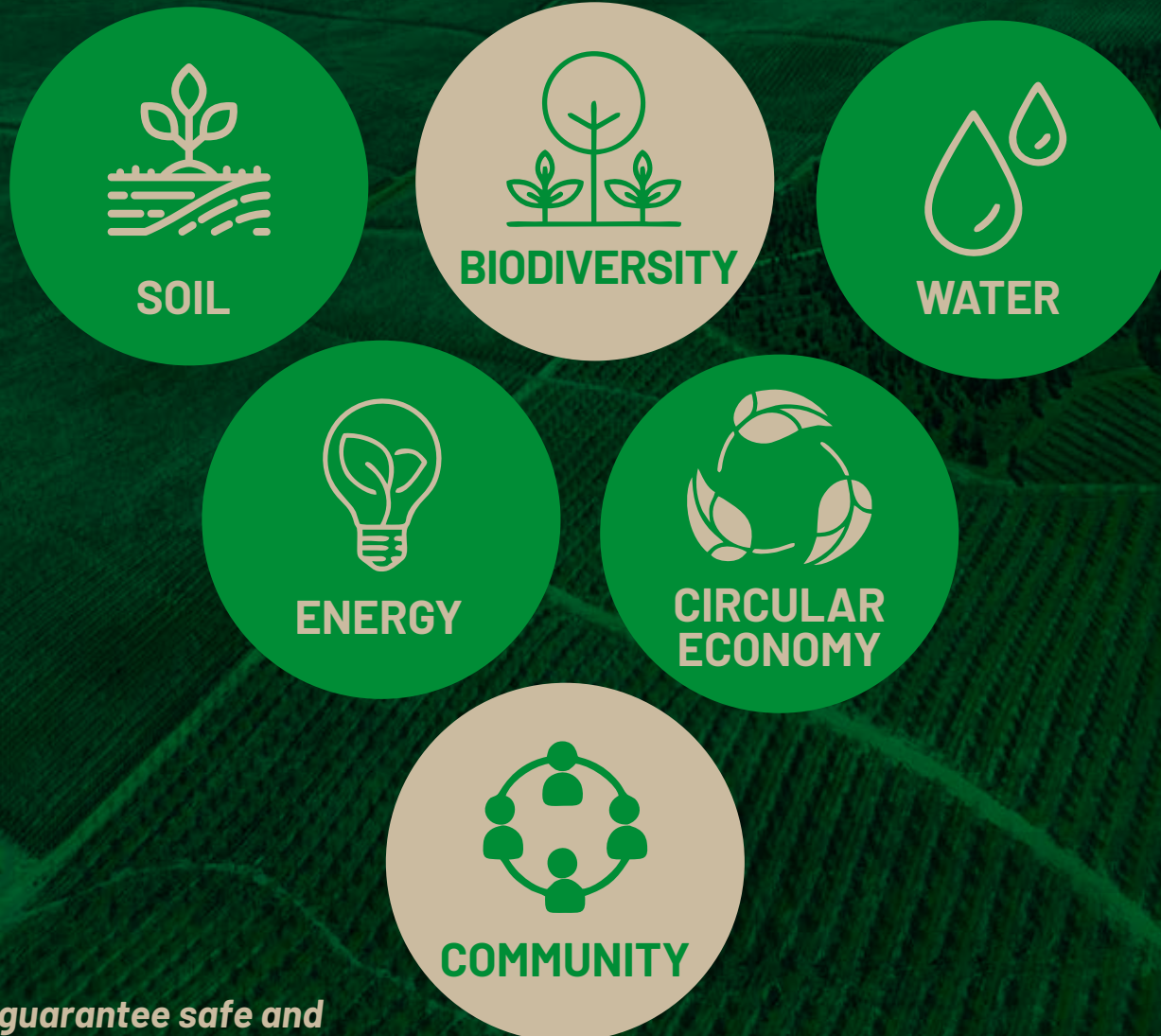


NATURAL FINE FLOUR
BLANCHED FINE FLOUR
BLANCHED EXTRA FINE FLOUR

WE ARE PASSIONATE ABOUT PROTECTING THE ENVIRONMENT

REGENERATIVE AGRICULTURE

On our farms we practice regenerative agriculture, focused on preserving precious resources such as soil, water, wildlife and flora for generations to come. We proudly strive towards greater biodiversity in order to protect nature's delicate balance!



Certifications that guarantee safe and sustainable food production:



REGENERATIVE AGRICULTURE

TO **MAINTAIN**, TO **SUSTAIN**,
TO **ENHANCE** AND TO **RESTORE**
OUR ECOSYSTEM



SOIL

Enhancing soil health is crucial for a sustainable and healthy ecosystem. By adopting circular economy techniques like utilizing almond byproducts and implementing organic compost application in rows, we are moving towards improving soil organic matter and reducing reliance on synthetic fertilizers. We also believe in promoting native ground cover adensation between rows to combat erosion and aid in the retention of soil water capacity. Our goal is to bolster overall soil microbial activity and foster a thriving environment.



BIODIVERSITY

Our initiative focuses on promoting ecosystem resiliency and conserving biodiversity through the installation of beehives and pollinator bands. By doing so, we can increase yields and provide economic support to local honey production businesses. Our efforts to reduce the use of phytopharmaceuticals in Veracruz orchards have already led to substantially lower rates of bee mortality compared to other farming production systems. Additionally, the edge effect observed throughout the orchards, which provides food and shelter for native fauna, plays a crucial role in balancing the ecosystem.

REGENERATIVE AGRICULTURE



WATER

Our technology enables water efficiency application and moisture sensors that allow constant measuring of soil water aiming for optimal water usage. Regarding total irrigation per area unit, Veracruz applies 35% & 45% less than conventional almonds orchard throughout the Mediterranean and California almond orchards, respectively. The harnessing of excess water in Veracruz own dams contribute to significant reduction impact on local communities water availability while fighting erosion.



ENERGY

Veracruz farms' carbon footprint baseline was calculated (935 ton CO₂eq) using the official IPCC methodology. We aim for continuous GHG reduction through improved production process efficiency and alternative energy resources such as the installation of solar panels on our farms.



CIRCULAR ECONOMY

By re-integrating of almond byproducts, we inhibit weed emergence having in mind herbicide reduction application; decrease soil evapotranspiration through hull mulching aiming for improved water storage capacity, as well as increasing soil carbon inputs promoting microbial activity.



COMMUNITY

Develop and promote within the region where we operate, creating jobs, supporting economy and prioritizing local suppliers. Partnership with institutes and universities to produce knowledge through scientific research and hiring and training local labor to contribute to the community's growth.

CARBON FOOTPRINT IMPROVEMENT



AS RESPONSIBLE FARMERS, WE UNDERSTAND THE **IMPORTANCE OF MINIMIZING OUR CARBON FOOTPRINT.**

OUR GOAL IS TO CREATE A BALANCED ECOSYSTEM BY MINIMIZING OUR IMPACT ON THE ENVIRONMENT. WE ARE ACTIVELY TAKING STEPS TO ACHIEVE THIS, INCLUDING **IMPLEMENTING PERMANENT GROUND COVER** AND UTILIZING OUR CARBON SEQUESTRATION SERVICE WITH 1.5 MILLION TREES. THROUGH THESE MEASURES, WE ARE COMMITTED TO CREATING A SUSTAINABLE FUTURE FOR OUR FARM.

WE'RE WORKING TOWARDS:

- LESS PHYTOPHARMACEUTICALS AND SYNTHETIC FERTILIZER USAGE
- LESS FOSSIL FUEL COMBUSTION
- NATURAL HABITAT CONSERVATION
- SOIL ORGANIC MATTER INCREASE



**BEING IN EUROPE,
OUR TRANSPORT EMISSIONS AND COSTS ARE REDUCED**

An aerial photograph of a vast almond orchard. The rows of trees are meticulously aligned, creating a strong sense of order and scale. A winding canal or irrigation system cuts through the landscape, reflecting the sky. The overall scene is lush and green, suggesting a healthy and well-maintained agricultural environment.

OUR ALMONDS
ENABLE YOU TO
COME CLOSER TO
YOUR SUSTAINABILITY OBJECTIVES



Veracruz wants to be your partner
and supply you with the finest
Mediterranean almonds.
Come and visit us. Our door is open
to welcome you at our estates.

GET IN TOUCH

antonio.saraiva@veracruzalmonds.com
+351 933 566 101

rodrigo.salles@veracruzalmonds.com
+351 925 130 801

Rua Filarmónica Idanhense, lote 68
6060-188 Idanha-a-Nova | Portugal



KNOW MORE

